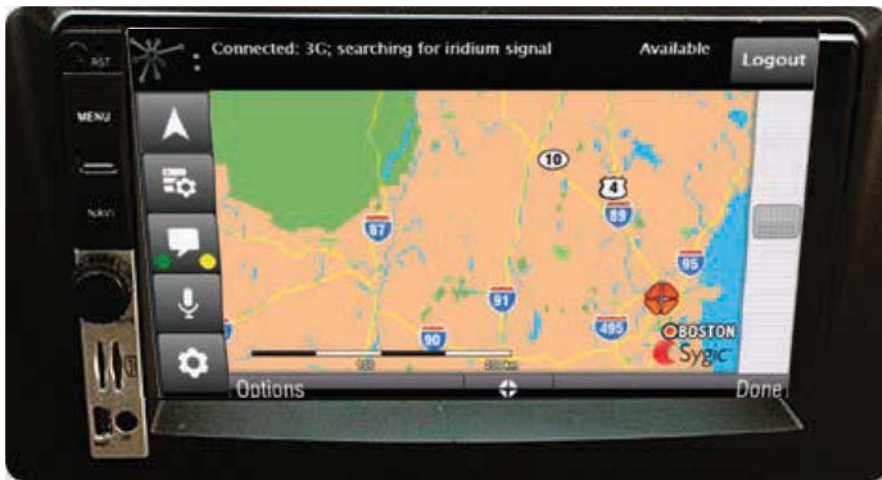


COMMUNIQUE 950

IN DASH TWO WAY COMMUNICATIONS DEVICE



The Communique 950 (CQ950) is Outerlink's in-dash touch screen device. Designed to bring the same tracking and communications superiority from our air experience to your ground fleet coupled with our cloud-based software OuterLink Console™ for dispatching, communicating, and monitoring.

KEY FEATURES:

- > In-dash device – no additional cab space is consumed
- > GPS tracking in real time or customized intervals
- > Seamless satellite conversion in the absence of a 3G signal - all for a fixed low monthly rate
 - Ideal for rural regions, MCI cell tower overload, terrorist events, or natural disasters
- > Automatic mileage recordings accurate up to a hundredth of a mile – more billable miles
- > Digital archive of all travel regardless of assigned or unassigned status
- > 2-way voice and text messages –unit-to-unit, unit-to-dispatch, and user-to-user
- > Standalone GPS navigation
 - Import your own favorites locations or points of interest
- > Wi-Fi hotspot
- > Provide wireless connections to over 4 independent devices including electronic patient care reporting (EPCR) tablets/laptops, cardiac monitors, ventilators, personal devices, etc.
- > 5 configurable general purpose input/output (GPIO) bits – usable for back-up cameras, engine monitoring, vehicle stats, etc.
- > Complimentary technical and customer support 24/7

MORE INFORMATION ABOUT OUTERLINK CONSOLE™ SOFTWARE:

- > Functions as CAD software
- > Add or delete designated zoom regions to easily toggle between bases at a touch of a button
- > Provides a fully customizable dashboard complete with data snapshots
- > Push to talk voice and text messaging
- > Unique color icons customized to represent units location, indicate speed, status, direction, and much more
- > Address lookup feature allows you to dispatch the closest asset to an assigned location transmitting address coordinates directly to the aircraft, vehicle, or marine unit-just press "accept" and go
- > Customizable point of interest (POI) overlay
- > Live forecast and weather overlay-customizable to specified bases or areas
- > Produce transport reports, archive data and more

LEARN MORE, GET SPECS & ORDER AT:

www.outerlink.com

Contact Sales
1-978-284-6070

Email
sales@outerlink.com

24/7 Support
1-877-688-3770

PLEASE REFER TO THE COMMUNIQUE 950 SPEC SHEET FOR MORE DETAILED INFORMATION